
CHC33021 Certificate III Individual Support (Ageing)



LEAD RTO #6022



Course Overview

This qualification reflects the role of workers in the community and/or residential setting who follow an individualised plan to provide person-centred support to people who may require support due to ageing, disability or some other reason. Work involves using discretion and judgement in relation to individual support as well as taking responsibility for their own outputs.

Workers have a range of factual, technical and procedural knowledge, as well as some theoretical knowledge of the concepts and practices required to provide person-centred support.

Who could enrol:

This course is suitable for a variety of learners such as people:

- who would like to obtain new skills and knowledge, including a change of career
- who wish to obtain a qualification in Individual Support in order to gain employment in the Aged Care Services industry
- employed in the Aged Care industry who wish to obtain a qualification and/or have their skills recognised

Potential Career Outcomes:

- Aged Care Worker
- Personal Care Giver
- Home Care Assistant
- Community Care Worker
- Family Support Worker



CHC33021 - Certificate III in Individual Support

This qualification includes 15 units of competency which comprises of 9 core and 6 elective units.

Elective units have been carefully selected based on the industry consultation to ensure the learners achieve the desired vocational outcomes of the course.



ELECTIVES MAY CHANGE DEPENDING ON YOUR TRAINING NEEDS

CORE:

- 1.CHCCCS031 - Provide individualised support
- 2.HLTINF006 - Apply basic principles and practices of infection prevention and control
- 3.HLTWHS002 - Follow safe work practices for direct client care
- 4.CHCCCS041 - Recognise healthy body systems
- 5.CHCDIV001 - Work with diverse people
- 6.CHCCOM005 - Communicate and work in health or community services
- 7.CHCLEG001 - Work legally and ethically
- 8.CHCCCS040 - Support independence and wellbeing
- 9.CHCCCS038 - Facilitate the empowerment of people receiving support

ELECTIVES

- 10.CHCAGE007 - Recognise and report risks of falls
- 11.CHCAGE011 - Provide support to people living with dementia
- 12.CHCAGE013 - Work effectively in aged care
- 13.CHCPAL003 - Deliver care services using a palliative approach
- 14.CHCCCS036 - Support relationships with career and family
- 15.CHCCCS017- Provide loss and grief counselling



Overview of Training

Study Commitment:

Students are required to complete a minimum of 1 unit/month or as directed by your training plan. You will need to undertake 20-30 hours of training per month to complete both the theory and practical elements of the qualification. You must also complete at least 120 hours of relevant work.

Duration:

15 months

Delivery Method:

Training is a blended mode including a mixed mode of face-to-face learning in virtual classrooms, self-directed online learning activities and student support sessions.

Assessment Methods

Written Assessments, Practical Assessments, Role Plays, Case Studies, Projects and Workplace Observations.

Requirements:

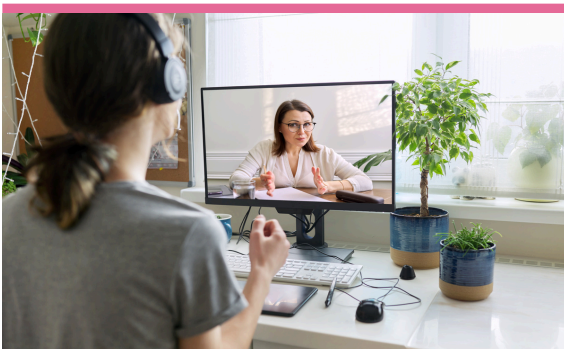
- 17 years+
- Completion of Language, Literacy & Numeracy test & Digital Literacy questionnaire (see over)
- Year 10 or equivalent or completed a Certificate II or higher level qualification

USI Number:

Valid USI number is required. Ask us if you require any assistance in creating it on your behalf or go to <https://www.usi.gov.au>

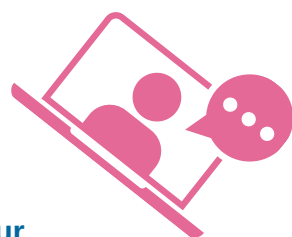
Other requirements (to work in Disability or Aged Care)

- Valid and current email address
- NDIS Check National Police Check
- Working with Children Check or
- Working with Vulnerable People Check



Interactive Training

- Custom-built learning platform.
- Interactive Learning
- Trainer Support
- Student Support throughout your training

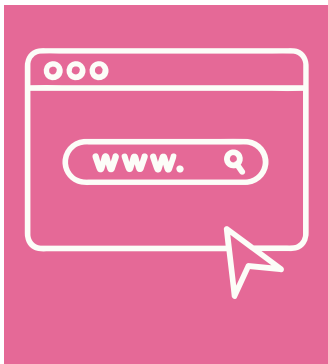


Becoming a Student with LEAD RTO

Here is a quick guide to help you decide if LEAD is the right RTO for you

LEAD RTO is a small RTO working across all States and territories in Australia.

LEAD has State and Territory funding contracts in NSW and the ACT. Depending on the funding cycle student may be eligible for subsidised training. Always talk to the LEAD team about you individual circumstances regarding available subsidies.



You will need the following:

- A computer/laptop or Tablet with keyboard.
- Secure internet connection
- Digital literacy - ability to use simple databases and download/upload additional forms.
- Unfortunately, our qualifications cannot be completed on a phone device.



Enrolment Process:

- Completion of relevant enrolment form for the qualification a student is enrolling in
- Completion of a Language Literacy and Numeracy test
- Completion of a Digital Literacy questionnaire.
- Completion of a Pre training questionnaire.



Commencement of Study:

- Once you enrol with LEAD RTO you will be provided with Learning and Assessment material via our online learning hub aXcelerate.
- You will be assigned a Trainer who will work with you throughout your Training. Additionally you have Student support services.

Payment Options

LEAD RTO are pleased to offer our student flexibility in how they may pay their fees.

FEE-FOR-SERVICE PROGRAMS:

You have the flexibility to make payments as per an agreed amount and duration. Please note that LEAD RTO does not accept any payment of fees over \$1500 at a time. We will discuss the payment options based on your individual circumstances.

FUNDED PROGRAMS:

If you enrol under a government subsidised option, your fees will be in accordance with the funding requirements as defined by the relevant funding body. Please speak to the enrolment officer for further details. More information can be found below:

[NSW Smart & Skilled](#)
[ACT - Skilled Capital](#)

Reach out to our team today.

 02 4934 9930

 training@leadrto.asn.au

 www.leadrto.asn.au



LEAD RTO #6022 | www.leadrto.asn.au

This training is subsidised by the NSW Government
*Eligibility Criteria applies