
CHC43121 Certificate IV in Disability Support



LEAD RTO #6022

Course Overview

This qualification reflects the role of individuals in a range of community settings and peoples' homes, who provide support in a manner that empowers people with disabilities to achieve greater levels of independence, self-reliance, community participation and wellbeing.

Workers promote a person-centred approach, work according to and may contribute to an individualised plan, and work without direct supervision. They may be required to supervise and/or coordinate a small team.

Who could enrol:

Learners who have completed any of the below:

- CHC33021 Certificate III in Individual Support (Disability)
- CHC33015 Certificate III in Individual Support (Disability)
- CHC30408 Certificate III in Disability PLUS the CHCSS00125 Entry to Certificate IV in Disability Support Skill Set.

Potential Career Outcomes:

- Family Support Worker
- Disability Support Worker
- Support Facilitator (Disability)
- Senior Personal Care Assistant
- Disability Team Supervisor





CHC43121 - Certificate IV in Disability Support

This qualification includes 10 units of competency which comprises of 7 core and 3 elective units.

Elective units have been carefully selected based on the industry consultation to ensure the learners achieve the desired vocational outcomes of the course.

ELECTIVES MAY CHANGE DEPENDING ON YOUR TRAINING NEEDS

CORE:

1. CHCLEG003 - Manage legal and ethical compliance
2. HLTWHS003 - Maintain work health and safety
3. CHCCCS044 - Follow established person-centred behaviour supports
4. CHCDIS017 - Facilitate community participation and social inclusion
5. CHCDIS018 - Facilitate ongoing skills development using a person-centred approach
6. CHCDIS019 - Provide person-centred services to people with disability with complex needs
7. CHCMHS001 - Work with people with mental health issues

ELECTIVES

8. CHCAGE011 - Provide support to people living with dementia
9. CHCDIS020 - Work effectively in disability support
10. CHCADV001 - Facilitate the interests and rights of clients



Overview of Training

Study Commitment:

Students are required to complete a minimum of 1 unit/month or as directed by your training plan. You will need to undertake 30-50 hours of training per month to complete both the theory and practical elements of the qualification.

Duration:

20 months

Delivery Method:

Training is a blended mode including a mixed mode of face-to-face learning in virtual classrooms, self-directed online learning activities and student support sessions.

Assessment Methods

Written Assessments, Practical Assessments, Role Plays, Case Studies, Projects and Workplace Observations.

Requirements:

- 17 years+
- Completion of Language, Literacy & Numeracy test & Digital Literacy questionnaire (see over)

USI Number:

Valid USI number is required. Ask us if you require any assistance in creating it on your behalf or go to <https://www.usi.gov.au>

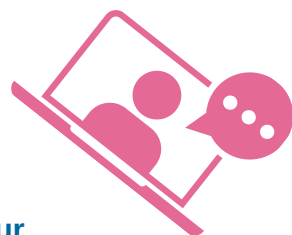
Other requirements (to work in Disability or Aged Care)

- Valid and current email address
- NDIS Check National Police Check
- Working with Children Check or
- Working with Vulnerable People Check



Interactive Training

- Custom-built learning platform.
- Interactive Learning
- Trainer Support
- Student Support throughout your training

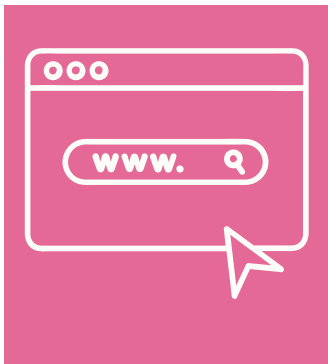


Becoming a Student with LEAD RTO

Here is a quick guide to help you decide if LEAD is the right RTO for you

LEAD RTO is a small RTO working across all States and territories in Australia.

LEAD has State and Territory funding contracts in NSW and the ACT. Depending on the funding cycle student may be eligible for subsidised training. Always talk to the LEAD team about you individual circumstances regarding available subsidies.



You will need the following:

- A computer/laptop or Tablet with keyboard.
- Secure internet connection
- Digital literacy - ability to use simple databases and download/upload additional forms.
- Unfortunately, our qualifications cannot be completed on a phone device.



Enrolment Process:

- Completion of relevant enrolment form for the qualification a student is enrolling in
- Completion of a Language Literacy and Numeracy test
- Completion of a Digital Literacy questionnaire.
- Completion of a Pre training questionnaire.



Commencement of Study:

- Once you enrol with LEAD RTO you will be provided with Learning and Assessment material via our online learning hub aXcelerate.
- You will be assigned a Trainer who will work with you throughout your Training. Additionally you have Student support services.

Payment Options

LEAD RTO are pleased to offer our student flexibility in how they may pay their fees.

FEE-FOR-SERVICE PROGRAMS:

You have the flexibility to make payments as per an agreed amount and duration. Please note that LEAD RTO does not accept any payment of fees over \$1500 at a time. We will discuss the payment options based on your individual circumstances.

FUNDED PROGRAMS:

If you enrol under a government subsidised option, your fees will be in accordance with the funding requirements as defined by the relevant funding body. Please speak to the enrolment officer for further details. More information can be found below:

[NSW Smart & Skilled](#)
[ACT - Skilled Capital](#)

Reach out to
our team today.

 02 4934 9930

 training@leadrto.asn.au

 www.leadrto.asn.au



LEAD RTO #6022 | www.leadrto.asn.au

This training is subsidised by the NSW Government
*Eligibility Criteria applies