

---

# CHC43315 Certificate IV in Mental Health



**LEAD RTO #6022**



---

# Course Overview

This qualification reflects the role of workers who provide self-directed recovery oriented support for people affected by mental illness and psychiatric disability. Work involves implementing community based programs and activities focusing on mental health, mental illness and psychiatric disability.

Work is undertaken in a range of community contexts such as community based non-government organisations; home based outreach; centre-based programs; respite care; residential services, rehabilitation programs; clinical settings; or supporting people in employment. Work is carried out autonomously under the broad guidance of other practitioners and professionals.

To achieve this qualification, the candidate must have completed at least 80 hours of work as detailed in the Assessment Requirements of units of competency.

## Who could enrol:

This course is suitable for a variety of learners such as people:

- who would like to obtain new skills and knowledge, including those who are changing careers
- who wish to obtain a qualification in community services in order to gain employment in the sector
- employed in community services and wish to obtain a qualification and/or have their skills recognised.

---

## Potential Career Outcomes:

- Mental Health Outreach worker
- Outreach officer
- Community Rehabilitation & Support Worker
- Assistant Community Services Worker



# CHC22015 Certificate II in Community Services

This qualification includes 15 units of competency which comprises of 11 core and 4 elective units.

Elective units have been carefully selected based on the industry consultation to ensure the learners achieve the desired vocational outcomes of the course.



**ELECTIVES MAY CHANGE DEPENDING ON YOUR TRAINING NEEDS**

## CORE

- 1.CHCDIV001 Work with diverse people
- 2.CHCDIV002 Promote Aboriginal and/or Torres Strait Islander cultural safety
- 3.CHCLEG001 Work legally and ethically
- 4.CHCMHS002 Establish self-directed recovery relationships
- 5.CHCMHS003 Provide recovery oriented mental health services
- 6.CHCMHS004 Work collaboratively with the care network and other services
- 7.CHCMHS005 Provide services to people with co-existing mental health and alcohol and other drugs issues
- 8.CHCMHS007 Work effectively in trauma informed care
- 9.CHCMHS003 Provide recovery oriented mental health services
10. CHCMHS011 Assess and promote social, emotional and physical wellbeing
11. HLTWHS001 Participate in workplace health and safety

## ELECTIVES

To be determined prior to commencement of training, based on your training needs.



# Overview of Training

## Study Commitment:

Students are required to complete a minimum of 1 unit/month or as directed by your training plan. You will need to undertake a pre-determined number of hours of training per month to complete both the theory and practical elements of the qualification.

## Duration:

20 months (or as directed in your training plan).

## Delivery Method:

Training is a blended mode including a mixed mode of face-to-face learning in virtual classrooms, self-directed online learning activities and student support sessions.

## Assessment Methods

Written Assessments, Practical Assessments, Role Plays, Case Studies, Projects and Workplace Observations.

## Requirements:

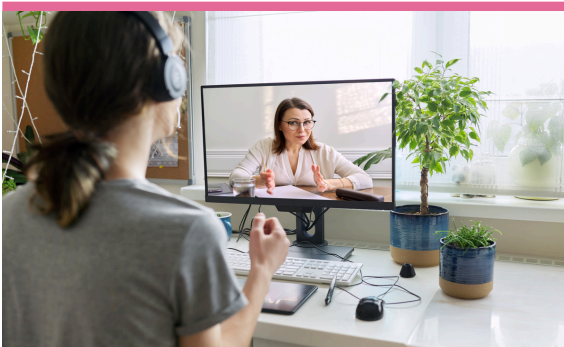
- 17 years+
- Completion of Language, Literacy & Numeracy test & Digital Literacy questionnaire (see over)
- Year 10 or equivalent or completed a Certificate II or higher level qualification

## USI Number:

Valid USI number is required. Ask us if you require any assistance in creating it on your behalf or go to <https://www.usi.gov.au>

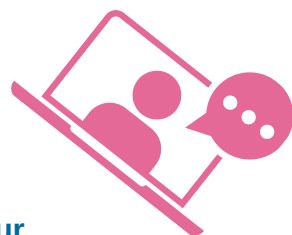
## Other requirements (to work in Disability or Aged Care)

- Valid and current email address
- NDIS Check National Police Check
- Working with Children Check or
- Working with Vulnerable People Check



## Interactive Training

- Custom-built learning platform.
- Interactive Learning
- Trainer Support
- Student Support throughout your training

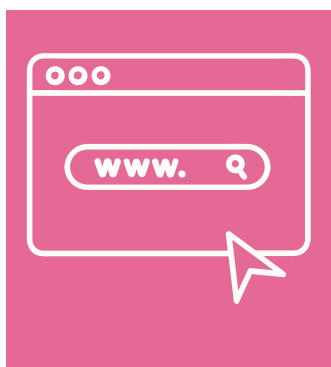


# Becoming a Student with LEAD RTO

Here is a quick guide to help you decide if LEAD is the right RTO for you

LEAD RTO is a small RTO working across all States and territories in Australia.

LEAD has State and Territory funding contracts in NSW and the ACT. Depending on the funding cycle student may be eligible for subsidised training. Always talk to the LEAD team about you individual circumstances regarding available subsidies.



## You will need the following:

- A computer/laptop or Tablet with keyboard.
- Secure internet connection
- Digital literacy - ability to use simple databases and download/upload additional forms.
- Unfortunately, our qualifications cannot be completed on a phone device.



## Enrolment Process:

- Completion of relevant enrolment form for the qualification a student is enrolling in
- Completion of a Language Literacy and Numeracy test
- Completion of a Digital Literacy questionnaire.
- Completion of a Pre training questionnaire.



## Commencement of Study:

- Once you enrol with LEAD RTO you will be provided with Learning and Assessment material via our online learning hub aXcelerate.
- You will be assigned a Trainer who will work with you throughout your Training. Additionally you have Student support services.

---

# Payment Options

LEAD RTO are pleased to offer our student flexibility in how they may pay their fees.

We tailor our fee-for-service model based on individual circumstance, so please reach out to us for more information.

You have the flexibility to make payments as per an agreed amount and duration. Please note that LEAD RTO does not accept any payment of fees over \$1500 at a time.

## FUNDED PROGRAMS:

If you enrol under a government subsidised option, your fees will be in accordance with the funding requirements as defined by the relevant funding body. Please speak to the enrolment officer for further details. More information can be found below:

[NSW Smart & Skilled](#)  
[ACT - Skilled Capital](#)

---

Reach out to  
our team today.

 02 4934 9930

 [training@leadrto.asn.au](mailto:training@leadrto.asn.au)

 [www.leadrto.asn.au](http://www.leadrto.asn.au)



LEAD RTO #6022 | [www.leadrto.asn.au](http://www.leadrto.asn.au)

This training is subsidised by the NSW Government  
\*Eligibility Criteria applies