
CHC22015 Certificate II in Community Services



LEAD RTO #6022

Course Overview

This qualification may be used as a pathway for workforce entry as community services workers who provide a first point of contact and assist individuals in meeting their immediate needs.

At this level, work takes place under direct, regular supervision within clearly defined guidelines.

Who could enrol:

This course is suitable for a variety of learners such as people:

- who would like to obtain new skills and knowledge, including those who are changing careers
- who wish to obtain a qualification in community services in order to gain employment in the sector
- employed in community services and wish to obtain a qualification and/or have their skills recognised.

Potential Career Outcomes:

- Assistant Community Services Worker
- Personal Care Giver
- Support Worker (community services)
- Community Services Contact Officer



CHC22015 Certificate II in Community Services



This qualification includes 9 units of competency which comprises of 5 core and 4 elective units.

Elective units have been carefully selected based on the industry consultation to ensure the learners achieve the desired vocational outcomes of the course.

ELECTIVES MAY CHANGE DEPENDING ON YOUR TRAINING NEEDS

CORE

- 1.CHCCOM001 Provide first point of contact
- 2.CHCCOM005 Communicate and work in health or community services
- 3.CHCDIV001 Work with diverse people
- 4.HLTWHS001 Participate in workplace health and safety
- 5.BSBWOR202 Organise and complete daily work activities

ELECTIVES

- 6.CHCCDE003 Work within a community development framework
- 7.CHCVOL001 Be an effective volunteer
- 8.CHCDIV002 Promote aboriginal and/or torres strait islander cultural safety
- 9.CHCPRT001 Identify and respond to children and young people at risk



Overview of Training

Study Commitment:

Students are required to complete a minimum of 1 unit/month or as directed by your training plan. You will need to undertake a pre-determined number of hours of training per month to complete both the theory and practical elements of the qualification.

Duration:

9 months (or as directed in your training plan).

Delivery Method:

Training is a blended mode including a mixed mode of face-to-face learning in virtual classrooms, self-directed online learning activities and student support sessions.

Assessment Methods

Written Assessments, Practical Assessments, Role Plays, Case Studies, Projects and Workplace Observations.

Requirements:

- 17 years+
- Completion of Language, Literacy & Numeracy test & Digital Literacy questionnaire (see over)
- Year 10 or equivalent or completed a Certificate II or higher level qualification

USI Number:

Valid USI number is required. Ask us if you require any assistance in creating it on your behalf or go to <https://www.usi.gov.au>

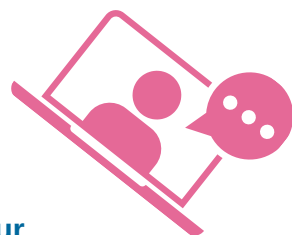
Other requirements (to work in Disability or Aged Care)

- Valid and current email address
- NDIS Check National Police Check
- Working with Children Check or
- Working with Vulnerable People Check



Interactive Training

- Custom-built learning platform.
- Interactive Learning
- Trainer Support
- Student Support throughout your training

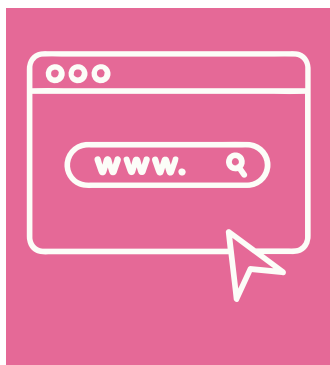


Becoming a Student with LEAD RTO

Here is a quick guide to help you decide if LEAD is the right RTO for you

LEAD RTO is a small RTO working across all States and territories in Australia.

LEAD has State and Territory funding contracts in NSW and the ACT. Depending on the funding cycle student may be eligible for subsidised training. Always talk to the LEAD team about you individual circumstances regarding available subsidies.



You will need the following:

- A computer/laptop or Tablet with keyboard.
- Secure internet connection
- Digital literacy - ability to use simple databases and download/upload additional forms.
- Unfortunately, our qualifications cannot be completed on a phone device.



Enrolment Process:

- Your Expression of Interest / Enquiry
- Completion of a Pre-training questionnaire and a Language Literacy and Numeracy Assessment (online)
- Completion of a Digital Literacy questionnaire.
- Completion of relevant enrolment form and an Orientation



Commencement of Study:

- Once you enrol with LEAD RTO you will be provided with Learning and Assessment material via our online learning hub aXcelerate.
- You will be assigned a Trainer who will work with you throughout your Training. Additionally you have Student support services.

Payment Options

LEAD RTO are pleased to offer students a payment plan to pay their fees.

Your course fees for CHC22015 – Certificate II in Community Services are as follows:

A non-refundable Enrolment fee of \$100 plus \$2000 to complete the program.

A payment plan with a third-party provider Ezypay is available to assist students spread their course payments over a 12 month period of time. Ezypay is a subscription payment option that enables you to create recurring direct debit payments.

For more information click [here](#).

FUNDED PROGRAMS:

If you are eligible to enrol under a government subsidised option, your fees will be in accordance with the requirements as defined by the relevant funding body. Please speak to the enrolment officer for further details. More information can be found below:

[NSW Smart & Skilled](#)
[ACT - Skilled Capital](#)

Reach out to our team today.



02 4934 9930



training@leadrto.asn.au



www.leadrto.asn.au



LEAD RTO #6022 | www.leadrto.asn.au

This training is subsidised by the NSW Government

*Eligibility Criteria applies