
CHC32015 Certificate III in Community Services



LEAD RTO #6022

Course Overview

This qualification reflects the role of entry level community services workers who support individuals through the provision of person-centred services. Work may include day-to-day support of individuals in community settings or support the implementation of specific community-based programs.

At this level, work takes place under the direction of others and supervision may be direct or indirect. Work may take place in a range of community services organisations.

Who could enrol:

This course is suitable for a variety of learners such as people:

- who would like to obtain new skills and knowledge, including those who are changing careers
- who wish to obtain a qualification in community services in order to gain employment in the sector
- employed in community services and wish to obtain a qualification and/or have their skills recognised.

Potential Career Outcomes:

- Youth Worker
- Community Care Worker
- Juvenile Justice Officer
- Assistant Community Worker
- Support Worker (Community Services)
- Residential Youth Worker
- Aboriginal or Torres Strait Islander Community Development Worker





CHC32015 Certificate III in Community Services

This qualification includes 12 units of competency which comprises of 5 core and 7 elective units.

Elective units have been carefully selected based on the industry consultation to ensure the learners achieve the desired vocational outcomes of the course.

ELECTIVES MAY CHANGE DEPENDING ON YOUR TRAINING NEEDS

CORE

- 01. CHCCCS016 - Respond to client needs
- 02. CHCCOM005 - Communicate and work in health or community services
- 03. CHCDIV001 - Work with diverse people
- 04. HLTWHS002 - Follow safe work practices for direct client care
- 05. HLTWHS006 - Manage personal stressors in the work environment

ELECTIVES

- 06. CHCCCS015 - Provide individualised support
- 07. CHCCCS019 - Recognise and respond to crisis situations
- 08. CHCCCS023 - Support independence and wellbeing
- 09. CHCDFV001 - Recognise and respond appropriately to domestic and family violence
- 10. CHCDIS007 - Facilitate the empowerment of people with disability
- 11. CHCDIV002 - Promote Aboriginal and/or Torres Strait Islander cultural safety
- 12. CHCMHS001 - Work with people with mental health issues



Overview of Training

Study Commitment:

Students are required to complete a minimum of 1 unit/month or as directed by your training plan. You will need to undertake a pre-determined number of hours of training per month to complete both the theory and practical elements of the qualification.

Duration:

12 months (or as directed in your training plan).

Delivery Method:

Training is a blended mode including a mixed mode of face-to-face learning in virtual classrooms, self-directed online learning activities and student support sessions.

Assessment Methods

Written Assessments, Practical Assessments, Role Plays, Case Studies, Projects and Workplace Observations.

Requirements:

- 17 years+
- Completion of Language, Literacy & Numeracy test & Digital Literacy questionnaire (see over)
- Year 10 or equivalent or completed a Certificate II or higher level qualification

USI Number:

Valid USI number is required. Ask us if you require any assistance in creating it on your behalf or go to <https://www.usi.gov.au>

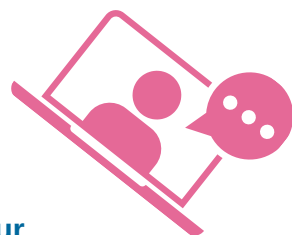
Other requirements (to work in Disability or Aged Care)

- Valid and current email address
- NDIS Check National Police Check
- Working with Children Check or
- Working with Vulnerable People Check



Interactive Training

- Custom-built learning platform.
- Interactive Learning
- Trainer Support
- Student Support throughout your training

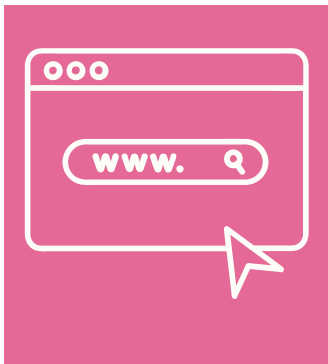


Becoming a Student with LEAD RTO

Here is a quick guide to help you decide if LEAD is the right RTO for you

LEAD RTO is a small RTO working across all States and territories in Australia.

LEAD has State and Territory funding contracts in NSW and the ACT. Depending on the funding cycle student may be eligible for subsidised training. Always talk to the LEAD team about you individual circumstances regarding available subsidies.



You will need the following:

- A computer/laptop or Tablet with keyboard.
- Secure internet connection
- Digital literacy - ability to use simple databases and download/upload additional forms.
- Unfortunately, our qualifications cannot be completed on a phone device.



Enrolment Process:

- Your Expression of Interest / Enquiry
- Completion of a Pre-training questionnaire and a Language Literacy and Numeracy Assessment (online)
- Completion of a Digital Literacy questionnaire.
- Completion of relevant enrolment form and an Orientation



Commencement of Study:

- Once you enrol with LEAD RTO you will be provided with Learning and Assessment material via our online learning hub aXcelerate.
- You will be assigned a Trainer who will work with you throughout your Training. Additionally you have Student support services.

Payment Options

LLEAD RTO are pleased to offer students a payment plan to pay their fees.

Your course fees for CHC32015 – Certificate III in Community Services are as follows:

A non-refundable Enrolment fee of \$100 plus \$3000 to complete the program.

A payment plan with a third-party provider Ezypay is available to assist students spread their course payments over a 12 month period of time. Ezypay is a subscription payment option that enables you to create recurring direct debit payments.

For more information click [here](#).

FUNDED PROGRAMS:

If you are eligible to enrol under a government subsidised option, your fees will be in accordance with the requirements as defined by the relevant funding body. Please speak to the enrolment officer for further details. More information can be found below:

[NSW Smart & Skilled*](#)

[ACT - Skilled Capital](#)

Reach out to our team today.

 02 4934 9930

 training@leadrto.asn.au

 www.leadrto.asn.au



LEAD RTO #6022 | www.leadrto.asn.au

This training is subsidised by the NSW Government

*Eligibility Criteria applies